

Windows 10 – How to install Transact 280 Ithaca Printer and to get it functioning

****The Ithaca 280 Printers should already be set to USB Printer Mode, if not please read section A. If they are, please skip to section B.**

****Ithaca 280 Printer must be in USB Printer Mode in order to work. If it is not go into Manual Configuration Mode**

A) Call Transact-tech for configuring Ithaca printer to get the Printer configure in USB Printer Mode

a. The number to call 847-748-4222 to get a hold of tech support

B) Once the Ithaca printer has been configured to USB Printer Mode download the Ithaca 280 Printer Drivers and unzip the folder and plug the USB cable from the Ithaca Printer into the docking station.

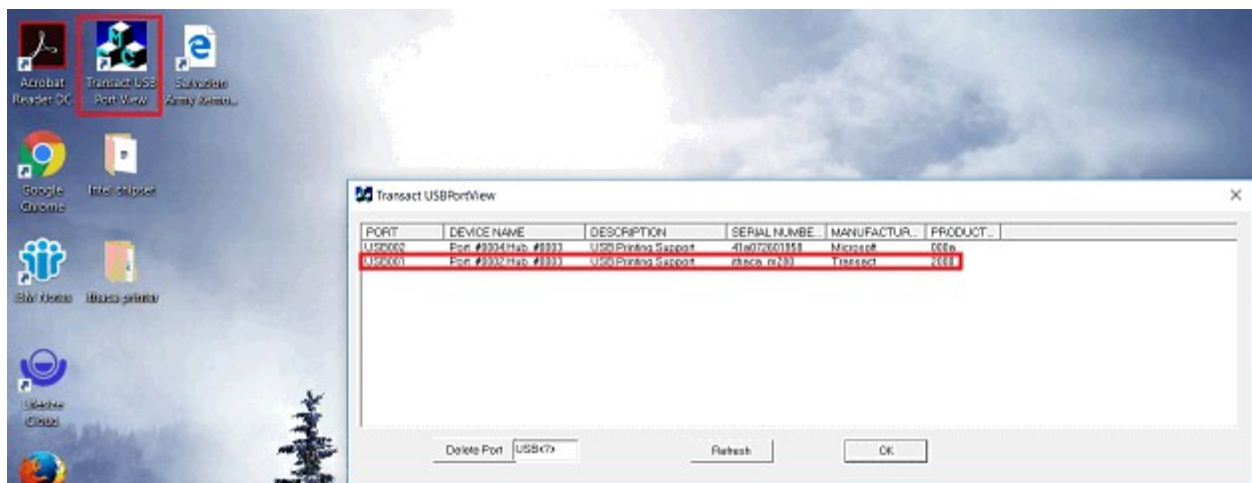
C) Add a Printer from Control Pane in Devices and Printers.

a. Select the option The Printer that I want isn't listed and click Next

b. Select the option Add a local printer or network printer with manual settings

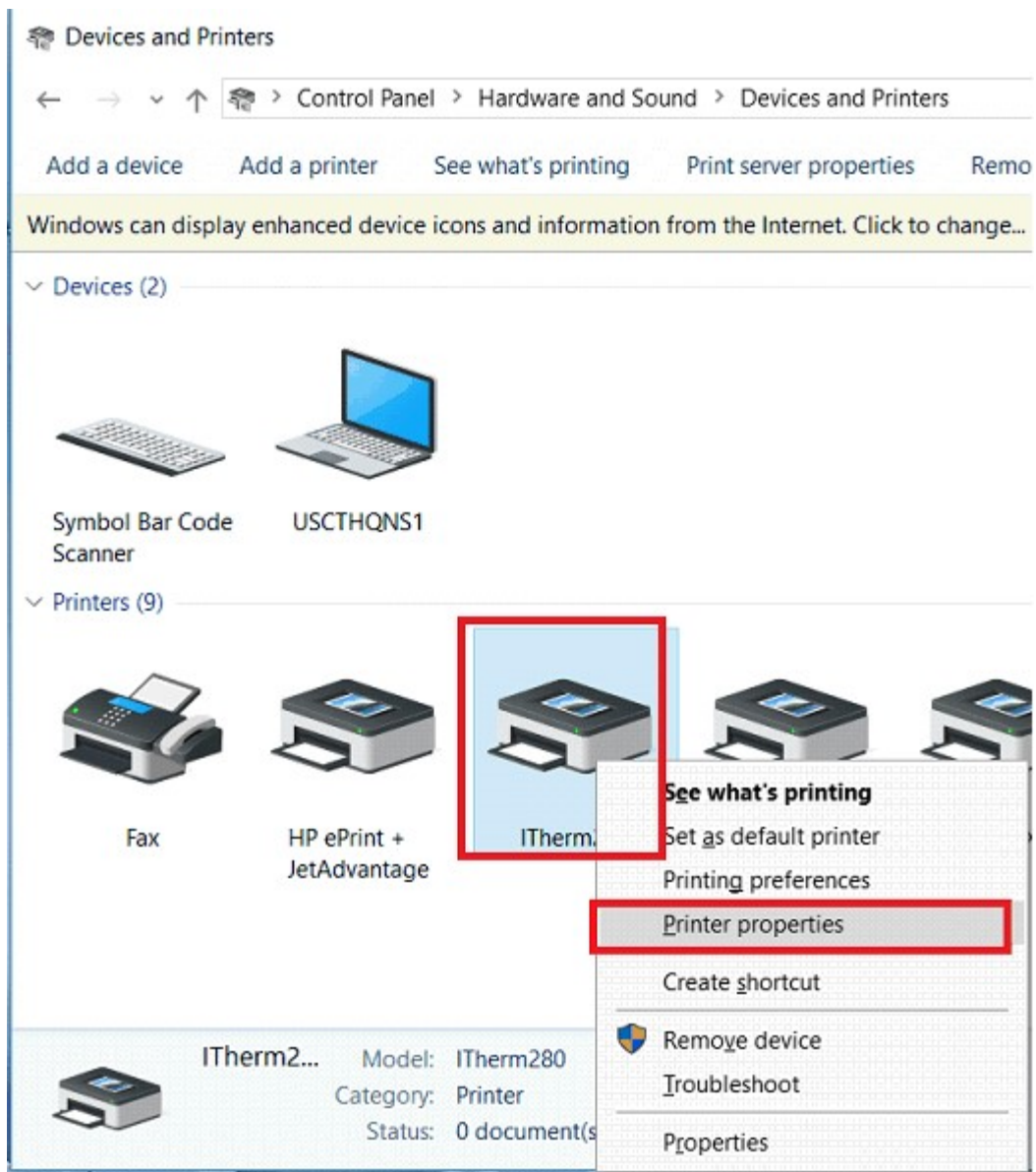
c. Select the option have disk and browse for ITherm-576 folder and open it and search for the .INF file.

D)

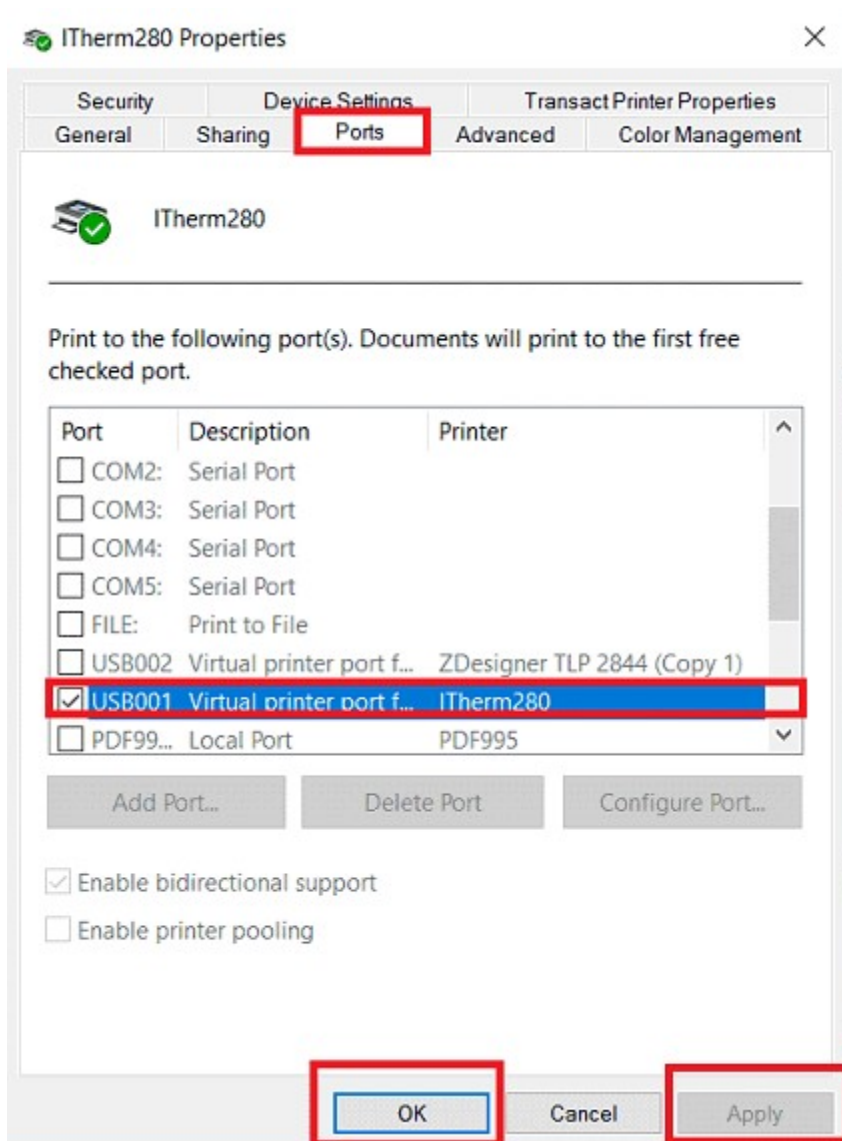


Go to the Transact website and download the file and download the Use USBPortView.exe 1.2.0.0 in Windows 8.1 and 10 from our website to see what USB port Windows assigned.

a. Figure out what port the printer is assigned go into the Printer Properties of the iTherm 280 Printer and go to the Ports Tab.



b.



Change the port the correct Port that was displayed in USBPortView.exe

E) Unzip the itherminstall folder then go into the Utilities folder and right click on TransactPrinterProperties application and run as Administrator

Name	Type	Compressed size	Password p...	Size	Ratio	Date modified
DefaultResetBat	File folder					9/4/2013 12:58 PM
CLMTest	Application	150 KB	No	308 KB	52%	9/8/2009 8:22 AM
Transact Language Monitor Config	Application	103 KB	No	216 KB	53%	9/9/2009 7:12 AM
TransactPrinterProperties	Application	101 KB	No	208 KB	52%	4/15/2010 1:41 PM
TransactWinDrvUninstall	Application	773 KB	No	1,549 KB	51%	12/14/2011 10:55 AM
USBPortView	Application	150 KB	No	304 KB	51%	9/24/2008 1:05 PM

F) Set the default settings for the iTherm Printer

TransactPrinterProperties Utility

File

Language Monitor (Shared Properties)

Periodic Status Back: OFF Cycle Time: 10000 ms

Printer Name: use <default> for default properties

<default>

Start Of Doc Commands

Start Of Page Commands Skip 1st Page Commands: YES

End Of Doc Commands followed by optional Feed, Cut, Drawer opens

EndDoc Line Feeds [ESC]d# 5 EOD Knife Cut [ESC]v YES

Fire Cash Drawer1: YES Fire Cash Drawer2: NO

[ESC]x<1> [ESC]x<2>

Reset Printer To Defaults Refresh Cancel Save Changes

G) Then test the iThermPrinter280 by having Trade test a transaction out in Great Plains.



10.docx

How to setup Ithaca 280 Printers in Windows