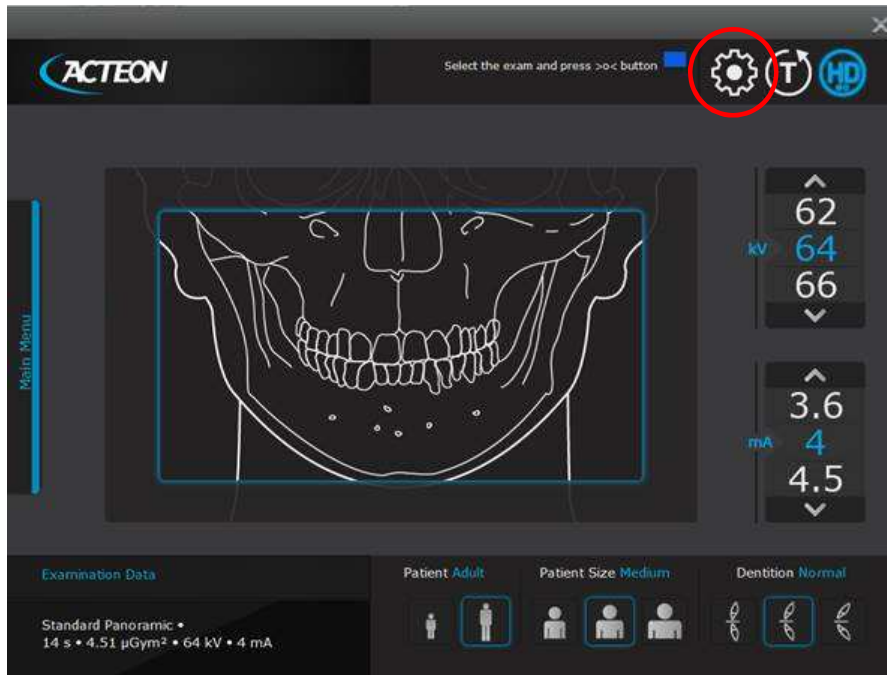
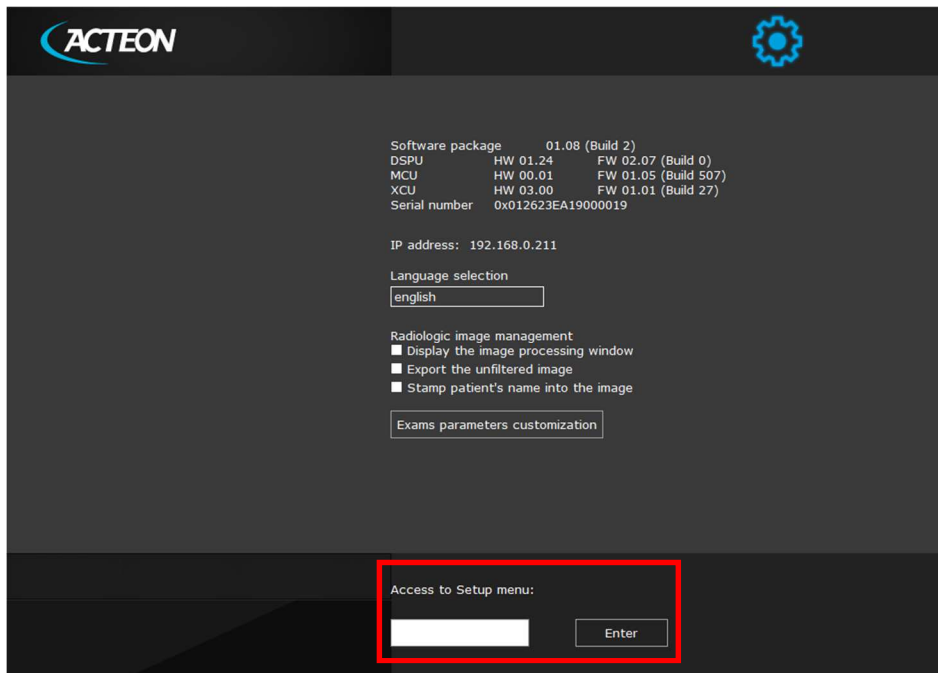


8. SERVICE PROGRAM DESCRIPTIONS

In order to access Service programs, from Main Menu select the symbol "GEAR" (configuration).



The first page show the SW versions present in the unit. This is useful in case it is required to know the actual versions. This page doesn't require any password.

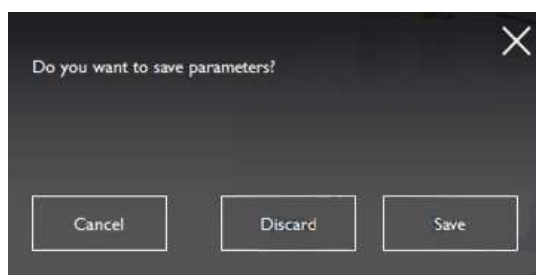


In order to enter in Configuration menu, type the password "TechAccess" in "Access to Setup menu" field and press Enter.

This page is reserved only to authorised technicians: it allows the access to the different functional parameters, as following:.

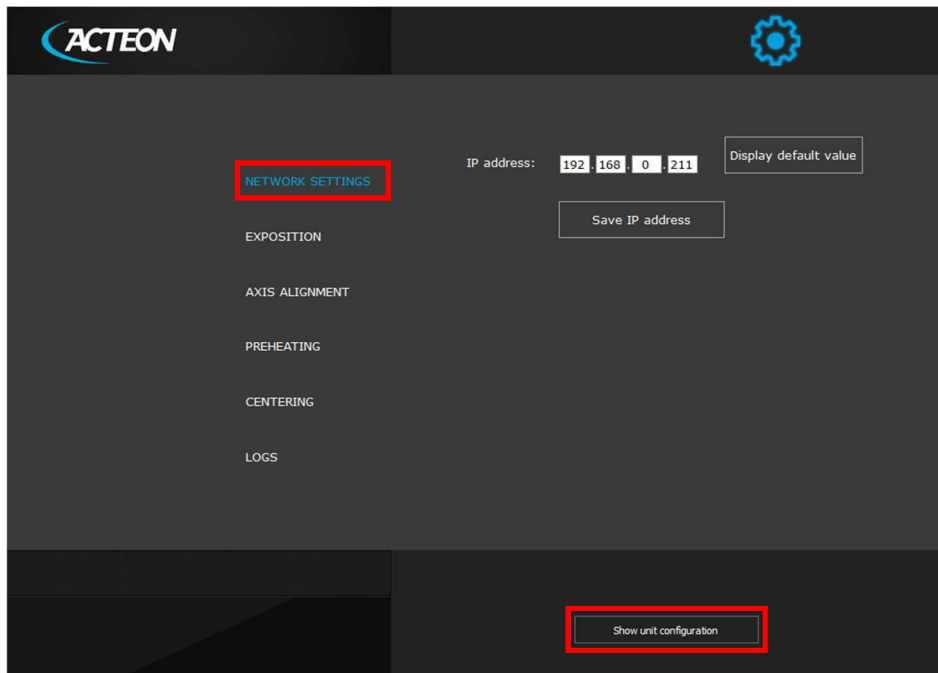
- **Network Setting:** allows to set the IP address of the sensor (see paragraph 8.1)
- **Exposition:** allows to disable X-ray emission permanently (see paragraph 8.2)
- **Axis Alignment:** allows to adjust motor offset (see paragraph 8.3)
- **Preheating:** allows to adjust the filament parameters. It is used only in case of tubehead replacement (see paragraph 8.4)
- **Logs:** this page displays the exam counters (see paragraph 8.5).

Each time a parameter is modified, or a different sub menu is selected, the unit will provide a confirmation window:



8.1. Network setting

Selecting "Network Setting" it is possible to modify the IP address used to communicate with the X-MIND prime (see paragraph 7.6).

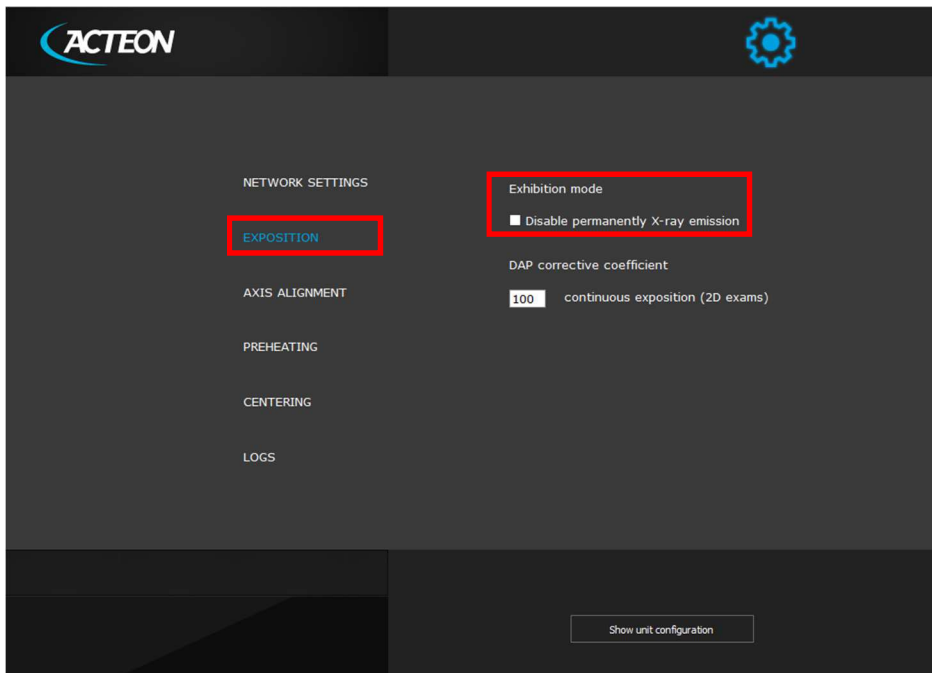


If necessary, change the IP Address according with the one present on the PC (same IP, but last 3 digits different; same Subnet mask).

Clicking on "Show unit configuration" button it is possible to check SW versions.

8.2. Exposition

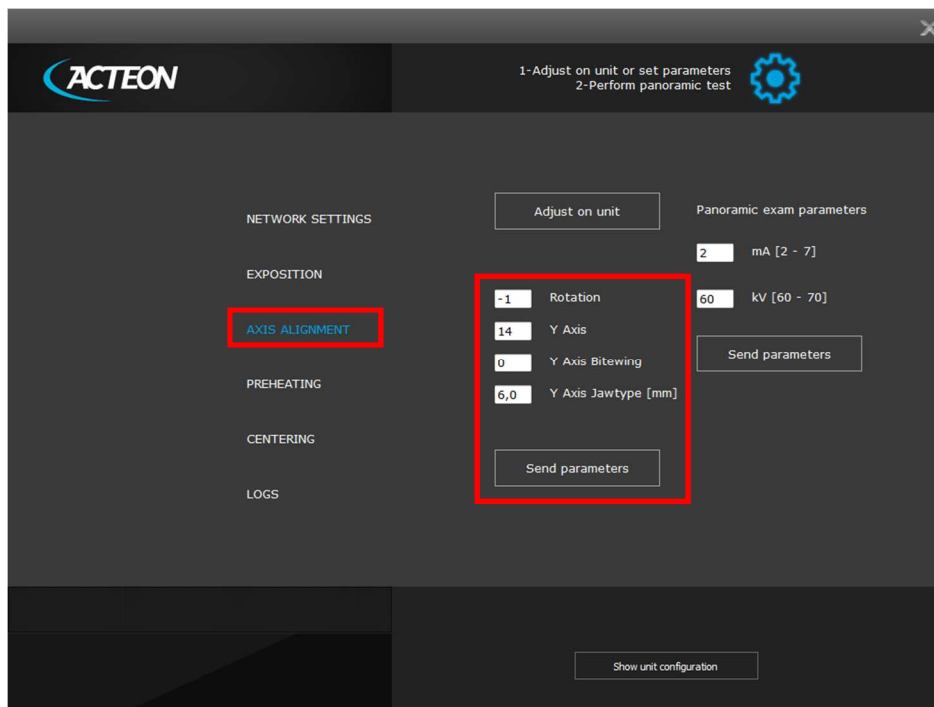
This function allows to disable X-ray emission permanently: check the box to disable X-rays.



8.3. Axis Alignment

This setup page allows to adjust the following motor offset:

- **Rotation** is used to adjust the arm rotation offset (positive values correspond to counter-clockwise rotation). It can be verified using the reference line on the support plate.
- **Y Axis** is used to adjust the position of the focal layer of Panoramic image. Modification of this parameter affects the size of the image (distance between the external spheres of the centering image – see paragraph 7.9)
- **Y Axis Bitewing** is used to adjust the Bitewing Y axis offset.
- **Y Axis Jawtype** is used to adjust the Y offset difference among different type of dentition (protruded, retruded).



In order to store the offset values permanently click on "Send parameters", select another menu (e.g. Centring) and then click "Save" on the displayed dialog window.



Warning

Modifying the motor offset values can severely impair functionality.

To check the effectiveness of the adjustments it is recommended to perform a panoramic acquisition using the centring tools as described in paragraph 7.9.

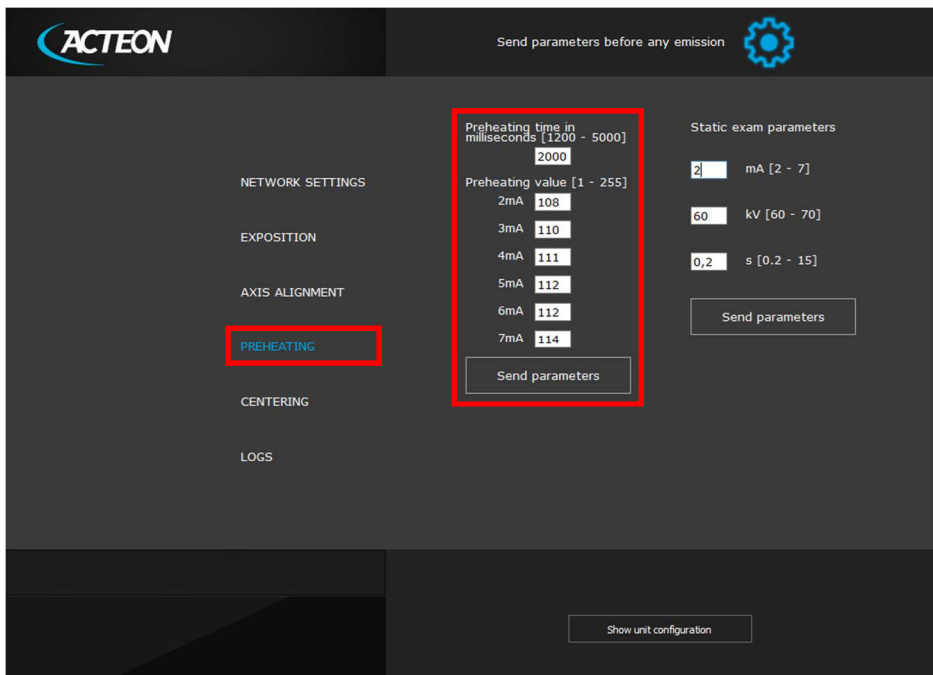
8.4. Preheating

This parameter allows to adjust the filament current used to emit properly the requested anodic current.



Note

This operation has to be done only in case of Tubehead replacement.



Warning

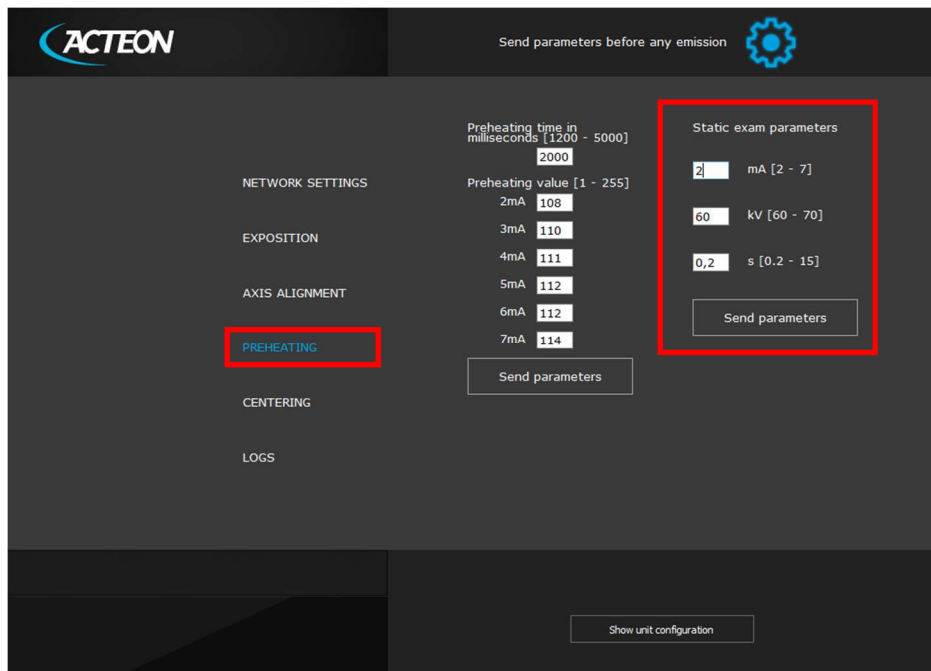
Wrong settings of preheating parameters may damage X-ray tube.

In order to store the offset values permanently click on "Send Parameters", select another menu (e.g. Centring) and then click "Save" on the displayed dialog window.



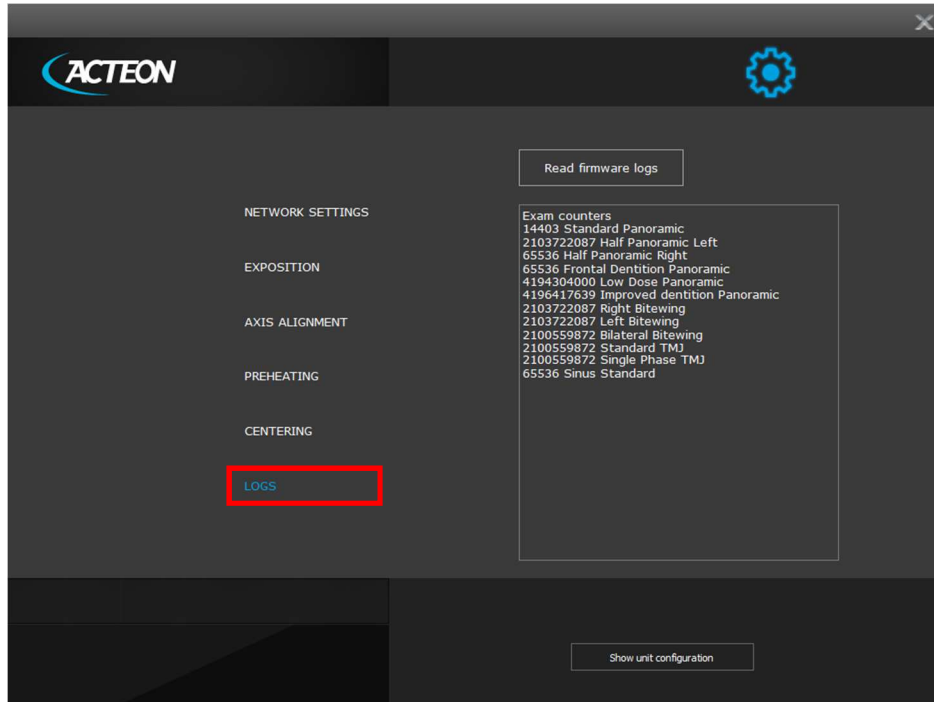
From this menu is it also possible to perform a static acquisition (no movements) with the collimator positioned on the panoramic window.

- Type the desired exposure parameters in the fields mA, kV, s.
- Click on the button "Send parameters" and wait for the message "Press X-ray button to start emission".
- Press the X-ray button.



8.5. Logs

In this page it is possible to see the exam counters.



In order to keep the unit logs, refer to paragraph 11.2.1.